

### Predict the Question

Introduction
Strategies
Independent Reading
Return to Text and Response

Content Domain

2a	2b	2c	2d	2e	2f	2g	2h
1a	1b	1c	1d	1e			

### Predict the Question

**Resources:** Window envelopes with questions partly visible.

**Method:** Ask children to read what they can see through the envelope window and then use their knowledge of the text to predict the question.



### Predict the Question

Introduction
Strategies
Independent Reading
Return to Text and Response

Content Domain

2a	2b	2c	2d	2e	2f	2g	2h
1a	1b	1c	1d	1e			

### Predict the Question

**Resources:** Window envelopes with questions partly visible.

**Method:** Ask children to read what they can see through the envelope window and then use their knowledge of the text to predict the question.



### Predict the Question

Introduction
Strategies
Independent Reading
Return to Text and Response

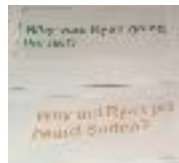
Content Domain

2a	2b	2c	2d	2e	2f	2g	2h
1a	1b	1c	1d	1e			

### Predict the Question

**Resources:** Window envelopes with questions partly visible.

**Method:** Ask children to read what they can see through the envelope window and then use their knowledge of the text to predict the question.



### Predict the Question

Introduction
Strategies
Independent Reading
Return to Text and Response

Content Domain

2a	2b	2c	2d	2e	2f	2g	2h
1a	1b	1c	1d	1e			

### Predict the Question

**Resources:** Window envelopes with questions partly visible.

**Method:** Ask children to read what they can see through the envelope window and then use their knowledge of the text to predict the question.

